

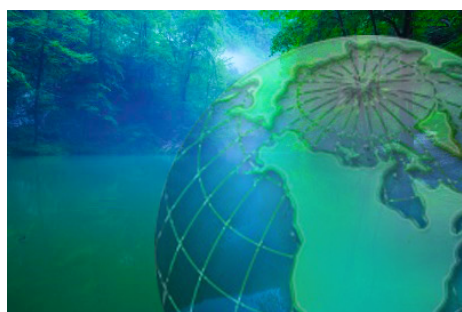
## Seeding the New Prototype for Earth

A new World View of Conscious Evolution

Series of 6 Articles: Part 5

“As Earth transfigures its body of consciousness,  
it moves through its cosmic birth canal  
and seeds its new prototype  
to support the new blueprint of human life.”

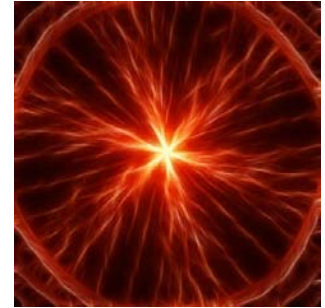
Welcome to the reading of this fifth article “Seeding the New Prototype for Earth.” In my previous transcript titled “Global and Planetary Conversion,” I shared some of the magnitude of Earth’s worldwide, celestial alterations. In this winter edition of the Quester’s publication I am sharing my perspective of Earth’s transfiguration within and throughout its body of consciousness, as these alterations pave the way for us, as inhabitants of Earth, to live in the new blueprint of human life.



Earth, originally known as 3<sup>rd</sup> dimensional Terra, is seeded from the cross-fertilization of many civilizations on other planets. This genetic foundation is implanted in the molten core of Earth as Galactic DNA. This DNA sustains cosmic encodements that create conversion on an interstellar scale. Hence, the new prototype for 5D Earth emanates the pulsating cosmic cadence of complete synergy.

*As published in The Canadian Society of Questers Winter 2012 Journal, The Quester. This transcript is Copyright© in 2012 by Salantra. Permission to copy or distribute it any form must be obtained. Please contact Salantra at [www.HeavenOnEarthInternational.com](http://www.HeavenOnEarthInternational.com).*

Scientists finally acknowledge that global warming is a true planetary emergency, and this worldwide phenomenon is a significant factor in the Earth's increase in molecular velocity. This observable fact is extremely visible, as many of us know that the water content of Earth's lakes, rivers and oceans have high concentrations of pollution, poisonous chemicals, radioactive substances and carbon dioxide. Global warming



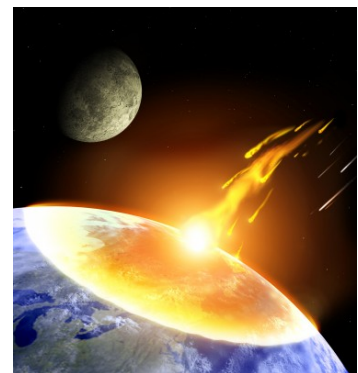
is also causing an increase in arctic temperatures, which affects the salinity in seawater, wind and ocean patterns that influence precipitation, drought, flooding, heat waves and tropical cyclones. Greenhouse gases in these Polar Regions are affecting the atmospheric pressure, and this has an effect on the oxygen levels in the air we breathe. For example, oxygen in the 5<sup>th</sup> dimension is partly infused with the etheric substance ether. There is an immense possibility



that the current oxygen altitude at 4,500 feet above sea level may transmute into the 5<sup>th</sup> dimensional substance, ether, after the tipping point occurs. If this is the case, this etheric substance is easier to inhale and can be likened to breathing while in a deep meditative state of consciousness. Are you willing to accept that

this prototype can become a potential reality in the new blueprint of human life?

Solar cycles are essential to Earth's evolution and the activities within these cycles are a direct energetic channel for the evolutionary progression of all sentient beings on Earth. As the increase in solar flare activity from the sun becomes energetically and visibly apparent, it is essential that we counteract any external stimulation by amplifying our frequency throughout our circuit system to avoid any effect from these solar flares.



*As published in The Canadian Society of Questers Winter 2012 Journal, The Quester. This transcript is Copyright© in 2012 by Salantra. Permission to copy or distribute it any form must be obtained. Please contact Salantra at [www.HeavenOnEarthInternational.com](http://www.HeavenOnEarthInternational.com).*



As Earth's grid system completely transfigures, new ley lines and vortices are formed to enable its new prototype to download into Earth's body of consciousness. The frequencies of these different ley lines interconnect with each other and transfiguration to their new patterns create advanced cosmic pulsations that we can intuitively sense or energetically feel here on Earth. Hence, as Earth seeds its new prototype, it rapidly changes the frequency of these ley lines into their 5D gridiron. This gridiron enables the cosmic pulsation to flow through Earth's body of consciousness. It also comprises a myriad of power centers throughout the world that determine the energetic crossroads of these ley lines as well as the verification of other phenomena that occurs in the Earth.

Earth's complete alteration to its new prototype enables new vortices to be created. Vortices sustain specific pulsations of cosmic energy present in the Earth. They are governed by highly advanced cosmic forces so therefore Earth's laws of nature do not apply. The formation of these new vortices will rebalance Earth's magnetic flow so that the conversion sustains itself within many new regions around the globe.

Although many of these ley lines and vortices transfigure to their new prototype during and following the tipping point, others reform many years after the new Earth fully aligns with its rightful position in the cosmos. Other ley lines and vortices will not become fully crystalline until well after Earth's conversion process is complete.

Earthquakes, storms, hurricanes, tornados, tsunamis and geographical migration all facilitate mass changes in human migration, all of which are an impetus towards the creation of the new prototype for Earth. These environmental alterations are creating a discharge of pent-up energy and as a result, the fluctuation of Earth's magnetic field is being directly impacted by the augmentation of surges occurring at its molten core. And in our day-to-day lives these

*As published in The Canadian Society of Questers Winter 2012 Journal, The Quester. This transcript is Copyright© in 2012 by Salantra. Permission to copy or distribute it any form must be obtained. Please contact Salantra at [www.HeavenOnEarthInternational.com](http://www.HeavenOnEarthInternational.com).*

alterations can create migration to other cities or countries. Of course this affects many of our loved ones as well as ourselves, for in theory, we are all part of unified consciousness.

Although professionals such as Geophysicists and Seismologists are carefully monitoring the substructure of Earth, and its quickened momentum of rotation, no one really knows the extent of these major alterations. Richard Gross, a geophysicist with NASA's Jet Propulsion Laboratory in California, theorized that a shift of mass toward Earth's center during the deadly Asian earthquake in 2005 may have initiated and accelerated the Earth's rotation, which caused the planet to spin 3 microseconds, or one millionth of a second faster, and to tilt about an inch (2.5 cm) on its axis. This implies that as one huge tectonic plate beneath the Indian Ocean is forced below the edge of another, it has the effect of making the Earth spin faster.

As many of us already know, Seismologists forecast that a future magnitude 9 earthquake is a high risk somewhere along the west coast from California to Alaska. For those individuals with an interest in earthquake activity, according to [www.earthquake.usgs.gov](http://www.earthquake.usgs.gov) and associates, their Real Time Earthquake Map shows hundreds of worldwide earthquakes occurring on a daily basis. Here in British Columbia Canada, there were 2 earthquakes in Masset on the same day; October 28, 2012 with magnitudes of 7.8 and 6.3, and one in Port Hardy, November 8, 2012 with a magnitude of 6.3.

Since 1994 Earth continues to move through its cosmic birth canal, and as it passes through the photon belt, it synthesizes the configuration of its new prototype. The photonic core, which is deep within the region of the photon belt, is a band of interstellar light in Earth's cosmic field that vibrates to a megahertz much higher than human life has ever experienced. As Earth passes through this band of light it is surrounded by a frequency known as the "Icosa-dodecahedron," a platonic solid that is air-based, comprises advanced



**Icosa-Dodecahedron**  
**Artist: Christina Bryer**

*As published in The Canadian Society of Questers Winter 2012 Journal, The Quester. This transcript is Copyright© in 2012 by Salantra. Permission to copy or distribute it any form must be obtained. Please contact Salantra at [www.HeavenOnEarthInternational.com](http://www.HeavenOnEarthInternational.com).*

frequencies of pentagons and triangles, and blends water with the 5D substance ether. The frequency of this geometric solid is non-material, and emanates a mother-of-pearl colored light that enables us to sense or feel a swirling spiral of radiant iridescent colors, that interweave with one another, yet sustain their own pulsation. Within this array of cosmic light Earth's gridiron vibrates to a cosmic cadence that pulsates to a more refined velocity, or different wavelengths of intergalactic resonance. This refinement enables us to assimilate these quantum frequencies as the light and cosmic cadence from Earth's etheric field downloads into our awareness. This fine-tuning naturally brings human awareness into balance so that we intentionally experience the unified consciousness of Heaven and Earth simultaneously.

The cosmic frequency of Earth's new prototype aligns it with its destined location in the cosmos as Earth ascends to its rightful position in the heavens as a star. To attain this position, the magnetic energy between Earth's 2 poles becomes uneven and one pole receives more energy than the other. This causes Earth's axis to tilt at an angle, and as its rotary motion increases, its frequency aligns with its own magnetic energy in the Galactic Core. All life forms everywhere feel the effects of this momentous tipping point



Multidimensional Hypergeometry by  
NitroX72 from [www.diviant.com](http://www.diviant.com)

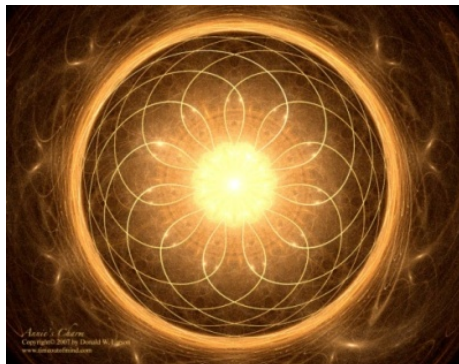
because it creates an energetic force field that lowers Earth's magnetics to the point where it can amplify its own frequency, and then, ultimately accelerate its rate of occurrence to warp speed. This amplification also increases the speed of Earth's revolution, and as Earth experiences the quickened momentum of this imminent process it synergizes its interstellar body of photonic light.

The enormous impetus of this new alignment signifies the completion of Earth's karmic cycles so that Earth can fully experience its progression of evolution throughout the Seventh Golden

*As published in The Canadian Society of Questers Winter 2012 Journal, The Quester. This transcript is Copyright© in 2012 by Salantra. Permission to copy or distribute it any form must be obtained. Please contact Salantra at [www.HeavenOnEarthInternational.com](http://www.HeavenOnEarthInternational.com).*

Age. This alignment brings forth another configuration with encodements that enable our solar system, galaxy and universe to chart a new star map throughout the heavens. And as the inhabitants of Earth, we also experience a similar domino effect in our day-to-day lives, and this is the momentum that facilitates transformation in our consciousness. Evolution itself is continuous; there is no beginning and no end; therefore, the entire cosmos is always evolving towards the out-breath and in-breath of creation, which of course, emits directly from the Great Central Sun.

As Earth completes the transfiguration of its outdated conformities, advanced systems for all organizational structure, as well as new concepts for the survival of human life, are implemented through the divine plan. This new prototype affects each of us in every area of our lives regardless of where we are in our evolutionary journey. Are you willing to expand your consciousness and imagine how human life will transform itself as the Earth and humanity experience 5<sup>th</sup> dimensional synergy? If you can answer this question, then you are already helping to seed Earth's new prototype.



The digital art image, "Annie's Charm" is copyright by Donald W. Larson [www.timeoutofmind.com](http://www.timeoutofmind.com), and used with his written permission.

For each of us to attain the ultimate task of seeding the new prototype for Earth, it is our responsibility to bring our energy into alignment with the vibratory frequency of the Galactic Core, so that we can experience resonance with the magnetic core of Earth. As we synthesize this balanced frequency we become more aware of our unified field of consciousness. Is the merging of this prototype so vast for you to comprehend that your human mind is unable to perceive the full impact that it has on your awareness?

*As published in The Canadian Society of Questers Winter 2012 Journal, The Quester. This transcript is Copyright© in 2012 by Salantra. Permission to copy or distribute it any form must be obtained. Please contact Salantra at [www.HeavenOnEarthInternational.com](http://www.HeavenOnEarthInternational.com).*

Regardless of the chaos that is in front of you and/or around you, remember to listen to the truth within your heart, and knowingly feel peace, balance and harmony in the midst of any turmoil and uncertainty. It is highly beneficial to remain as centered as possible, as Godself always places us in the right place at the right time regardless of the situation that we are in.



In this moment you might be asking, “How can I accomplish what appears to be such a challenging task? An excellent response to this question is to be fully present, trust your innate abilities, and then flow with the impetus of your evolutionary experiences.

This 6-part series of articles contains essential information to support you as you take a major leap of faith in the impetus of your evolutionary journey towards the most important shift in human history. As you read through this series I trust that you, the Reader, will make conscious choices for yourself, assist those you love, and hold this planet in your heart so that it completes its shift with as much ease and grace as possible.

Salantra, founder of Heaven on Earth International Inc. is a Heart-centered Entrepreneur, Golden Age Teacher, Professional Frequency Holder, Clairsentient, and Vibrational Intuitive. She is also an ACE Certified Agent for Conscious Evolution, Self-Published Author and founding member of AWG: Archimedes Writers Group.

To contact Salantra:

Email: [info@HeavenOnEarthInternational.com](mailto:info@HeavenOnEarthInternational.com)

Phone: 250.764.1179

Business: 250.764.1163

Cell: 778.985.5681

NB: In October 2012 I became a member of the Canadian Society of Questers and am honored to be involved in this community. As a new resident to Kelowna, well, I absolutely love living here.

*As published in The Canadian Society of Questers Winter 2012 Journal, The Quester. This transcript is Copyright© in 2012 by Salantra. Permission to copy or distribute it any form must be obtained. Please contact Salantra at [www.HeavenOnEarthInternational.com](http://www.HeavenOnEarthInternational.com).*